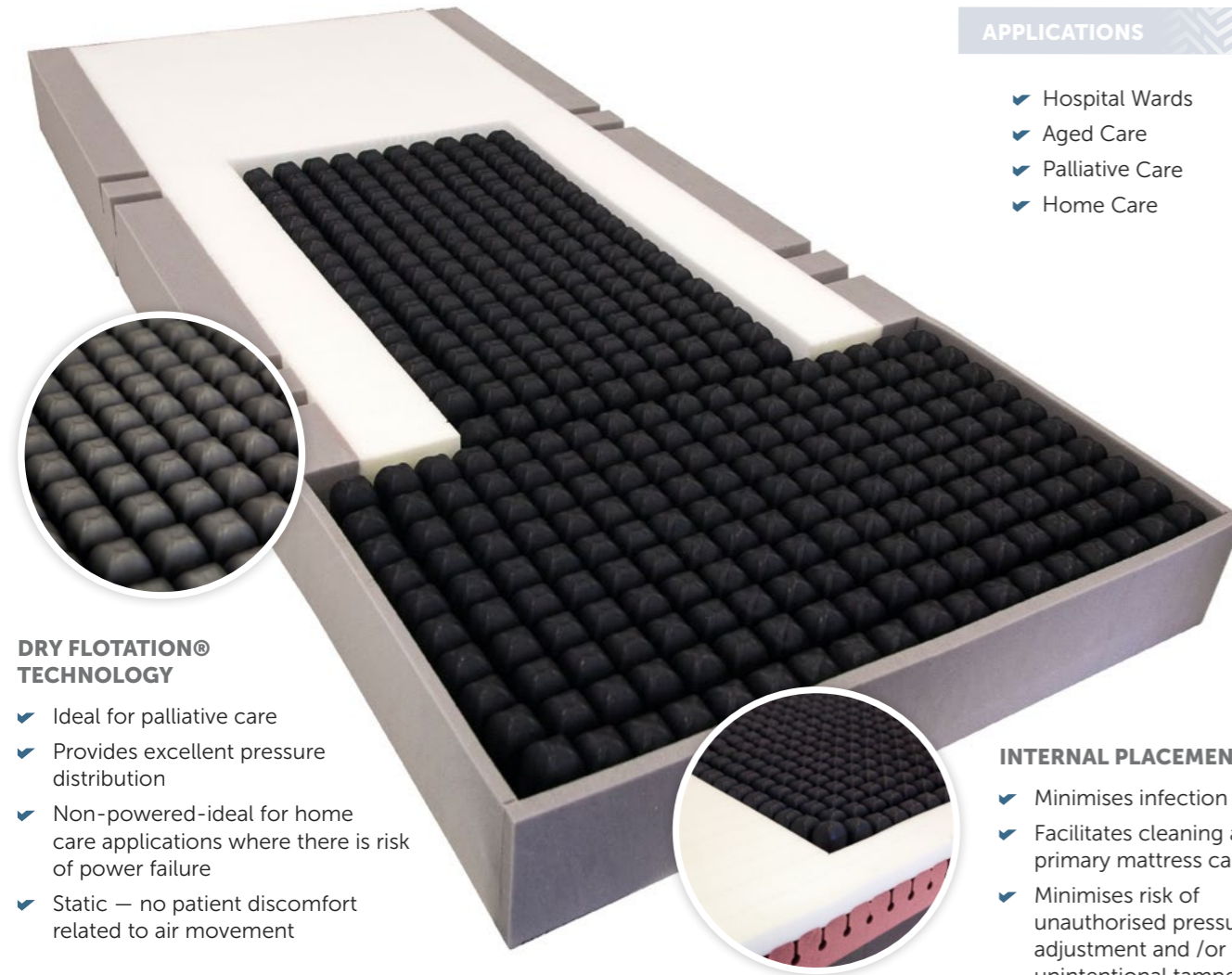


Forte ROHO Integrated Systems

Modular, Customisable, Suited for Very High Risk Pressure Care

EVERY PRODUCT
CUSTOM MADE

Using the renowned and trusted pressure care attributes of the ROHO system, Forte Healthcare offer you the flexibility to use ROHO technology integrated within quality mattress systems. Whether it be a specific pain management or palliative care ward usage to a complex client in home care, you can adapt the ROHO system to any configuration you require. Any mattress from the Sovereign, Icon and Icon MaXX range can be adapted to suit the ROHO mattress segments giving you versatility to suit the complete spectrum of patient requirements.



APPLICATIONS

- ✓ Hospital Wards
- ✓ Aged Care
- ✓ Palliative Care
- ✓ Home Care

DRY FLOTATION® TECHNOLOGY

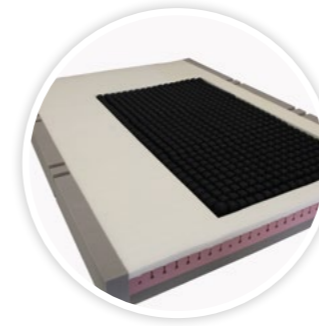
- ✓ Ideal for palliative care
- ✓ Provides excellent pressure distribution
- ✓ Non-powered-ideal for home care applications where there is risk of power failure
- ✓ Static – no patient discomfort related to air movement

INTERNAL PLACEMENT

- ✓ Minimises infection risk
- ✓ Facilitates cleaning and primary mattress care
- ✓ Minimises risk of unauthorised pressure adjustment and /or unintentional tampering with settings

Specifications

	CODE	SINGLE SEGMENT SIZE
Single Segment	817181M1	
Double Segment	817181M2	860x490x75mm
Triple Segment	817181M3	
EFFECTIVE WEIGHT CAPACITY*	ROHO SEGMENTS HAVE NO MAXIMUM PATIENT WEIGHT LIMIT. THE WEIGHT LIMIT IS DICTATED BY THE SUPPORT SURFACE THAT THE ROHO SEGMENT IS PLACED WITHIN.	
WARRANTY**	ROHO INSERT: 2 YEARS	



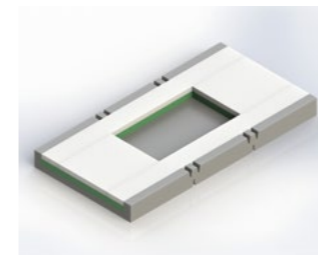
POSITIONING

- ✓ The ROHO segment can be positioned various ways within a mattress with the option of 1, 2, 3 or maximum 4 segments (when positioned laterally) per mattress. Additional custom positioning available upon request

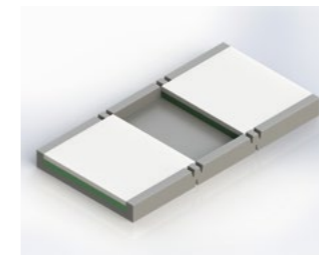
SOVEREIGN
ICON
FOURFRONT

AVAILABLE WITH THE FOLLOWING FORTE MATTRESS RANGES:

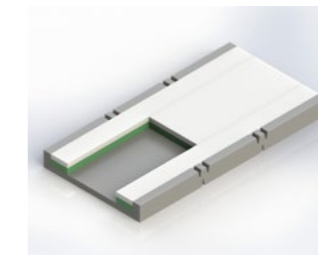
- ✓ Sovereign
- ✓ ICON
- ✓ ICON MaXX
- ✓ Merit



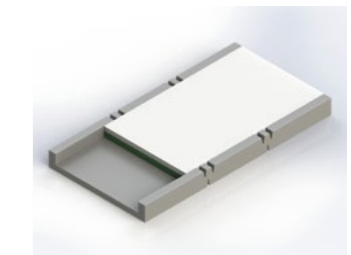
Single Segment
Centered - Vertical



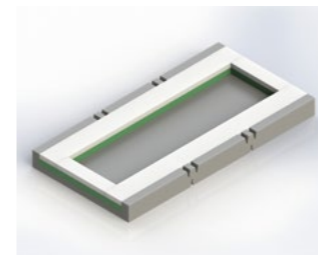
Single Segment
Centered - Horizontal



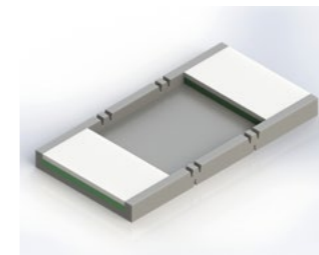
Single Segment
Foot/Head End - Vertical



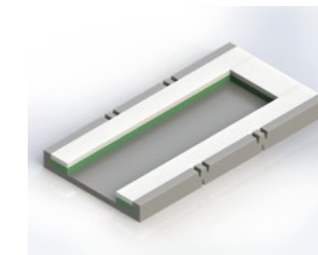
Single Segment
Foot/Head End - Horizontal



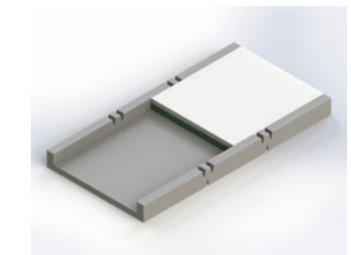
Double Segment
Centered - Vertical



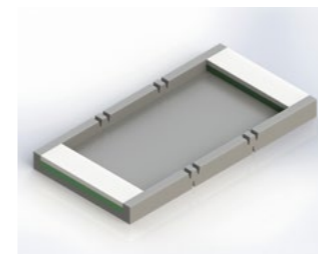
Double Segment
Centered - Horizontal



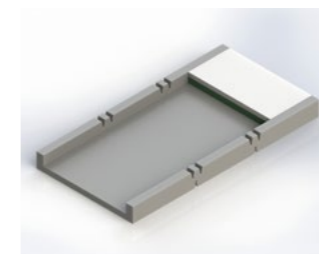
Double Segment
Foot/Head End - Vertical



Double Segment
Foot/Head End - Horizontal



Triple Segment
Centered - Horizontal



Triple Segment
Foot/Head End - Horizontal